

# Test Report

**Report No.: MTi220218003-02C1**

**Date of Issue: February 24, 2022**

**Client: Wireless-Tag Technology Co., Ltd**

**Product: WIFI Module**

**Test Type: Commissioned Inspection**

**Shenzhen Microtest Co., Ltd.**

<http://www.mtitest.com>



# Instructions

1. The report shall not be partially reproduced without the written consent of the Laboratory ;
2. The test results of this report are only responsible for the samples submitted ;
3. This report is invalid without the seal and signature of the laboratory ;
4. This report is invalid if transferred, altered or tampered with in any form without authorization ;
5. Any objection to this report shall be submitted to the laboratory within 15 days from the date of receipt of the report.

# TEST REPORT

Report No.:MTi220218003-02C1

Page 1 of 20

Basic Information			
Client	Wireless-Tag Technology Co., Ltd		
Client Address	801, Block A, Building 6, Shenzhen International Innovation Valley, Dashi Road, Xili Community, Xili Street, Nanshan District, Shenzhen		
Manufacturer	Wireless-Tag Technology Co., Ltd		
Manufacturer Address	801, Block A, Building 6, Shenzhen International Innovation Valley, Dashi Road, Xili Community, Xili Street, Nanshan District, Shenzhen		
Sample Information			
Product	WIFI Module	Model	WT32-SC01
Serial Model	/	Brand/ Trademark	Wireless-tag
Sample Number	1	Sample Description	/
Testing Information			
Sample Receive Date	February 21, 2022	Sample Source	Customer provided
Test Specification	With reference to RoHS Directive (EU) 2015/863 amending 2011/65/EU .		
Date of Tests	February 22, 2022- February 24, 2022		
Test Address	Chemistry lab		
Test Results:	Please refer to next page(s).		
Conclusion:	The submitted sample(s) complied with the Lead, Cadmium, Mercury, Hexavalent Chromium, PBBs, PBDEs, DBP, BBP, DEHP, DIBP content requirement according to RoHS Directive (EU) 2015/863 amending 2011/65/EU.		
Compiled:	Noak Zhang	Reviewed:	Tobey Lin
		Approved:	olima

**Test Method:**

**1. With reference to IEC 62321-2:2013, review was performed for the samples disjointed from the submitted articles.**

**2. With reference to IEC 62321-1:2013, tests were performed for the samples indicated by**

**the photos in this report:**

**(1) With reference to IEC 62321-3-1:2013, screening by XRF spectroscopy.**

**(2) Wet chemical test method.**

**a. With reference to IEC 62321-5:2013, determination of Cadmium by ICP-OES.**

**b. With reference to IEC 62321-5:2013, determination of Lead by ICP-OES.**

**c. With reference to IEC 62321-4:2017, determination of Mercury by ICP-OES.**

**d. With reference to IEC 62321-7-1:2015 & IEC 62321-7-2:2017, determination of Hexavalent chromium by Colorimetric method using UV-Vis.**

**e. With reference to IEC 62321-6:2015, determination of PBBs and PBDEs by GC-MS.**

**3. With reference to IEC 62321-8: 2017, determination of phthalates by GC-MS.**

# TEST REPORT

Report No.:MTi220218003-02C1

Page 3 of 20

## Testing Result:

Part No.	Sample Description	Test item	XRF Result	Chemical Test (mg/kg)	Conclusion
1	Transparent plastic	Pb	BL	/	Pass
		Cd	BL	/	
		Hg	BL	/	
		Cr(Cr(VI))	BL	/	
		Br(PBBs&PBDEs)	BL	/	
		Phthalate(DBP\BBP \DEHP\DIBP)	--	N.D.	
2	Glass	Pb	BL	/	Pass
		Cd	BL	/	
		Hg	BL	/	
		Cr(Cr(VI))	BL	/	
		Br(PBBs&PBDEs)	--	--	
		Phthalate(DBP\BBP \DEHP\DIBP)	--	--	
3	Transparent plastic	Pb	BL	/	Pass
		Cd	BL	/	
		Hg	BL	/	
		Cr(Cr(VI))	BL	/	
		Br(PBBs&PBDEs)	BL	/	
		Phthalate(DBP\BBP \DEHP\DIBP)	--	N.D.	
4	LCD display	Pb	BL	/	Pass
		Cd	BL	/	
		Hg	BL	/	
		Cr(Cr(VI))	BL	/	
		Br(PBBs&PBDEs)	BL	/	
		Phthalate(DBP\BBP \DEHP\DIBP)	--	N.D.	

# TEST REPORT

Report No.:MTi220218003-02C1

Page 4 of 20

Part No.	Sample Description	Test item	XRF Result	Chemical Test (mg/kg)	Conclusion
5	Black foam	Pb	BL	/	Pass
		Cd	BL	/	
		Hg	BL	/	
		Cr(Cr(VI)	BL	/	
		Br(PBBs&PBDEs)	BL	/	
		Phthalate(DBP\BBP \DEHP\DIBP)	--	N.D.	
6	Silvery metal	Pb	BL	/	Pass
		Cd	BL	/	
		Hg	BL	/	
		Cr(Cr(VI)	X	N.D.	
		Br(PBBs&PBDEs)	--	--	
		Phthalate(DBP\BBP \DEHP\DIBP)	--	--	
7	White plastic	Pb	BL	/	Pass
		Cd	BL	/	
		Hg	BL	/	
		Cr(Cr(VI)	BL	/	
		Br(PBBs&PBDEs)	BL	/	
		Phthalate(DBP\BBP \DEHP\DIBP)	--	N.D.	
8	Silvery plastic	Pb	BL	/	Pass
		Cd	BL	/	
		Hg	BL	/	
		Cr(Cr(VI)	BL	/	
		Br(PBBs&PBDEs)	BL	/	
		Phthalate(DBP\BBP \DEHP\DIBP)	--	N.D.	
9	Transparent plastic	Pb	BL	/	Pass
		Cd	BL	/	
		Hg	BL	/	
		Cr(Cr(VI)	BL	/	
		Br(PBBs&PBDEs)	BL	/	
		Phthalate(DBP\BBP \DEHP\DIBP)	--	N.D.	

# TEST REPORT

Report No.:MTi220218003-02C1

Page 5 of 20

Part No.	Sample Description	Test item	XRF Result	Chemical Test (mg/kg)	Conclusion
10	White plastic	Pb	BL	/	Pass
		Cd	BL	/	
		Hg	BL	/	
		Cr(Cr(VI)	BL	/	
		Br(PBBs&PBDEs)	BL	/	
		Phthalate(DBP\BBP \DEHP\DIBP)	--	N.D.	
11	Translucent plastic	Pb	BL	/	Pass
		Cd	BL	/	
		Hg	BL	/	
		Cr(Cr(VI)	BL	/	
		Br(PBBs&PBDEs)	BL	/	
		Phthalate(DBP\BBP \DEHP\DIBP)	--	N.D.	
12	Black foam	Pb	BL	/	Pass
		Cd	BL	/	
		Hg	BL	/	
		Cr(Cr(VI)	BL	/	
		Br(PBBs&PBDEs)	BL	/	
		Phthalate(DBP\BBP \DEHP\DIBP)	--	N.D.	
13	White LED	Pb	BL	/	Pass
		Cd	BL	/	
		Hg	BL	/	
		Cr(Cr(VI)	BL	/	
		Br(PBBs&PBDEs)	BL	/	
		Phthalate(DBP\BBP \DEHP\DIBP)	--	N.D.	
14	Golden Flexible Flat Cable	Pb	BL	/	Pass
		Cd	BL	/	
		Hg	BL	/	
		Cr(Cr(VI)	BL	/	
		Br(PBBs&PBDEs)	BL	/	
		Phthalate(DBP\BBP \DEHP\DIBP)	--	N.D.	

# TEST REPORT

Report No.:MTi220218003-02C1

Page 6 of 20

Part No.	Sample Description	Test item	XRF Result	Chemical Test (mg/kg)	Conclusion
15	Yellow tape	Pb	BL	/	Pass
		Cd	BL	/	
		Hg	BL	/	
		Cr(Cr(VI))	BL	/	
		Br(PBBs&PBDEs)	BL	/	
		Phthalate(DBP\BBP \DEHP\DIBP)	--	N.D.	
16	Black IC	Pb	BL	/	Pass
		Cd	BL	/	
		Hg	BL	/	
		Cr(Cr(VI))	BL	/	
		Br(PBBs&PBDEs)	BL	/	
		Phthalate(DBP\BBP \DEHP\DIBP)	--	N.D.	
17	Golden Flexible Flat Cable	Pb	BL	/	Pass
		Cd	BL	/	
		Hg	BL	/	
		Cr(Cr(VI))	BL	/	
		Br(PBBs&PBDEs)	BL	/	
		Phthalate(DBP\BBP \DEHP\DIBP)	--	N.D.	
18	Black plastic	Pb	BL	/	Pass
		Cd	BL	/	
		Hg	BL	/	
		Cr(Cr(VI))	BL	/	
		Br(PBBs&PBDEs)	BL	/	
		Phthalate(DBP\BBP \DEHP\DIBP)	--	N.D.	
19	Silvery metal	Pb	BL	/	Pass
		Cd	BL	/	
		Hg	BL	/	
		Cr(Cr(VI))	X	N.D.	
		Br(PBBs&PBDEs)	--	--	
		Phthalate(DBP\BBP \DEHP\DIBP)	--	--	



# TEST REPORT

Report No.:MTi220218003-02C1

Page 7 of 20

Part No.	Sample Description	Test item	XRF Result	Chemical Test (mg/kg)	Conclusion
20	Silvery metal	Pb	BL	/	Pass
		Cd	BL	/	
		Hg	BL	/	
		Cr(Cr(VI))	BL	/	
		Br(PBBs&PBDEs)	--	--	
		Phthalate(DBP\BBP \DEHP\DIBP)	--	--	
21	Silvery metal	Pb	BL	/	Pass
		Cd	BL	/	
		Hg	BL	/	
		Cr(Cr(VI))	X	N.D.	
		Br(PBBs&PBDEs)	--	--	
		Phthalate(DBP\BBP \DEHP\DIBP)	--	--	
22	Black plastic	Pb	BL	/	Pass
		Cd	BL	/	
		Hg	BL	/	
		Cr(Cr(VI))	BL	/	
		Br(PBBs&PBDEs)	BL	/	
		Phthalate(DBP\BBP \DEHP\DIBP)	--	N.D.	
23	Silvery metal	Pb	BL	/	Pass
		Cd	BL	/	
		Hg	BL	/	
		Cr(Cr(VI))	BL	/	
		Br(PBBs&PBDEs)	--	--	
		Phthalate(DBP\BBP \DEHP\DIBP)	--	--	
24	Silvery metal	Pb	BL	/	Pass
		Cd	BL	/	
		Hg	BL	/	
		Cr(Cr(VI))	BL	/	
		Br(PBBs&PBDEs)	--	--	
		Phthalate(DBP\BBP \DEHP\DIBP)	--	--	

# TEST REPORT

Report No.:MTi220218003-02C1

Page 8 of 20

Part No.	Sample Description	Test item	XRF Result	Chemical Test (mg/kg)	Conclusion
25	Black plastic	Pb	BL	/	Pass
		Cd	BL	/	
		Hg	BL	/	
		Cr(Cr(VI))	BL	/	
		Br(PBBs&PBDEs)	BL	/	
		Phthalate(DBP\BBP \DEHP\DIBP)	--	N.D.	
26	Black plastic	Pb	BL	/	Pass
		Cd	BL	/	
		Hg	BL	/	
		Cr(Cr(VI))	BL	/	
		Br(PBBs&PBDEs)	BL	/	
		Phthalate(DBP\BBP \DEHP\DIBP)	--	N.D.	
27	Silvery metal	Pb	BL	/	Pass
		Cd	BL	/	
		Hg	BL	/	
		Cr(Cr(VI))	BL	/	
		Br(PBBs&PBDEs)	--	--	
		Phthalate(DBP\BBP \DEHP\DIBP)	--	--	
28	White plastic	Pb	BL	/	Pass
		Cd	BL	/	
		Hg	BL	/	
		Cr(Cr(VI))	BL	/	
		Br(PBBs&PBDEs)	BL	/	
		Phthalate(DBP\BBP \DEHP\DIBP)	--	N.D.	
29	Gray plastic	Pb	BL	/	Pass
		Cd	BL	/	
		Hg	BL	/	
		Cr(Cr(VI))	BL	/	
		Br(PBBs&PBDEs)	BL	/	
		Phthalate(DBP\BBP \DEHP\DIBP)	--	N.D.	

# TEST REPORT

Report No.:MTi220218003-02C1

Page 9 of 20

Part No.	Sample Description	Test item	XRF Result	Chemical Test (mg/kg)	Conclusion
30	Silvery metal	Pb	BL	/	Pass
		Cd	BL	/	
		Hg	BL	/	
		Cr(Cr(VI))	X	N.D.	
		Br(PBBs&PBDEs)	--	--	
		Phthalate(DBP\BBP \DEHP\DIBP)	--	--	
31	Copper metal	Pb	BL	/	Pass
		Cd	BL	/	
		Hg	BL	/	
		Cr(Cr(VI))	BL	/	
		Br(PBBs&PBDEs)	--	--	
		Phthalate(DBP\BBP \DEHP\DIBP)	--	--	
32	Silvery metal	Pb	BL	/	Pass
		Cd	BL	/	
		Hg	BL	/	
		Cr(Cr(VI))	BL	/	
		Br(PBBs&PBDEs)	--	--	
		Phthalate(DBP\BBP \DEHP\DIBP)	--	--	
33	Black PCB	Pb	BL	/	Pass
		Cd	BL	/	
		Hg	BL	/	
		Cr(Cr(VI))	BL	/	
		Br(PBBs&PBDEs)	BL	/	
		Phthalate(DBP\BBP \DEHP\DIBP)	--	N.D.	
34	Black IC	Pb	BL	/	Pass
		Cd	BL	/	
		Hg	BL	/	
		Cr(Cr(VI))	BL	/	
		Br(PBBs&PBDEs)	BL	/	
		Phthalate(DBP\BBP \DEHP\DIBP)	--	N.D.	

# TEST REPORT

Report No.:MTi220218003-02C1

Page 10 of 20

Part No.	Sample Description	Test item	XRF Result	Chemical Test (mg/kg)	Conclusion
35	Black IC	Pb	BL	/	Pass
		Cd	BL	/	
		Hg	BL	/	
		Cr(Cr(VI))	BL	/	
		Br(PBBs&PBDEs)	BL	/	
		Phthalate(DBP\BBP \DEHP\DIBP)	--	N.D.	
36	Solder	Pb	BL	/	Pass
		Cd	BL	/	
		Hg	BL	/	
		Cr(Cr(VI))	BL	/	
		Br(PBBs&PBDEs)	--	--	
		Phthalate(DBP\BBP \DEHP\DIBP)	--	--	
37	Black IC	Pb	BL	/	Pass
		Cd	BL	/	
		Hg	BL	/	
		Cr(Cr(VI))	BL	/	
		Br(PBBs&PBDEs)	BL	/	
		Phthalate(DBP\BBP \DEHP\DIBP)	--	N.D.	
38	Diode	Pb	BL	/	Pass
		Cd	BL	/	
		Hg	BL	/	
		Cr(Cr(VI))	BL	/	
		Br(PBBs&PBDEs)	X	N.D.	
		Phthalate(DBP\BBP \DEHP\DIBP)	--	N.D.	
39	Yellow LED	Pb	BL	/	Pass
		Cd	BL	/	
		Hg	BL	/	
		Cr(Cr(VI))	BL	/	
		Br(PBBs&PBDEs)	X	N.D.	
		Phthalate(DBP\BBP \DEHP\DIBP)	--	N.D.	

# TEST REPORT

Report No.:MTi220218003-02C1

Page 11 of 20

Part No.	Sample Description	Test item	XRF Result	Chemical Test (mg/kg)	Conclusion
40	Black IC	Pb	BL	/	Pass
		Cd	BL	/	
		Hg	BL	/	
		Cr(Cr(VI))	BL	/	
		Br(PBBs&PBDEs)	X	N.D.	
		Phthalate(DBP\BBP \DEHP\DIBP)	--	N.D.	
41	Audion	Pb	BL	/	Pass
		Cd	BL	/	
		Hg	BL	/	
		Cr(Cr(VI))	BL	/	
		Br(PBBs&PBDEs)	X	N.D.	
		Phthalate(DBP\BBP \DEHP\DIBP)	--	N.D.	
42	Resistance	Pb	BL	/	Pass
		Cd	BL	/	
		Hg	BL	/	
		Cr(Cr(VI))	BL	/	
		Br(PBBs&PBDEs)	X	N.D.	
		Phthalate(DBP\BBP \DEHP\DIBP)	--	N.D.	
43	Capacitor	Pb	BL	/	Pass
		Cd	BL	/	
		Hg	BL	/	
		Cr(Cr(VI))	BL	/	
		Br(PBBs&PBDEs)	X	N.D.	
		Phthalate(DBP\BBP \DEHP\DIBP)	--	N.D.	
44	Black IC	Pb	BL	/	Pass
		Cd	BL	/	
		Hg	BL	/	
		Cr(Cr(VI))	BL	/	
		Br(PBBs&PBDEs)	X	N.D.	
		Phthalate(DBP\BBP \DEHP\DIBP)	--	N.D.	

## TEST REPORT

Report No.:MTi220218003-02C1

Page 12 of 20

Part No.	Sample Description	Test item	XRF Result	Chemical Test (mg/kg)	Conclusion
45	Crystal Oscillator	Pb	BL	/	Pass
		Cd	BL	/	
		Hg	BL	/	
		Cr(Cr(VI))	BL	/	
		Br(PBBs&PBDEs)	X	N.D.	
		Phthalate(DBP\BBP \DEHP\DIBP)	--	N.D.	

### Remark:

- (1) (a) It is the result on total Br while test item on restricted substances is PBBs/PBDEs. It is the result on total Cr while test item on restricted substances is Cr<sup>6+</sup>.  
 (b) Results are obtained by XRF for primary screening, and further chemical testing by ICP-OES (for Cd, Pb, Hg), UV-Vis (for Cr(VI)) and GC-MS (for PBBs, PBDEs) is recommended to be performed, if the concentration exceeds the below warning value according to IEC62321-3-1:2013 (unit: mg/kg).

Element	Polymers	Metals	Composite Material
Cd	$BL \leq (70-3\sigma) < X < (130+3\sigma) \leq OL$	$BL \leq (70-3\sigma) < X < (130+3\sigma) \leq OL$	$LOD < X < (150+3\sigma) \leq OL$
Pb	$BL \leq (700-3\sigma) < X < (1300+3\sigma) \leq OL$	$BL \leq (700-3\sigma) < X < (1300+3\sigma) \leq OL$	$BL \leq (500-3\sigma) < X < (1500+3\sigma) \leq OL$
Hg	$BL \leq (700-3\sigma) < X < (1300+3\sigma) \leq OL$	$BL \leq (700-3\sigma) < X < (1300+3\sigma) \leq OL$	$BL \leq (500-3\sigma) < X < (1500+3\sigma) \leq OL$
Cr	$BL \leq (700-3\sigma) < X$	$BL \leq (700-3\sigma) < X$	$BL \leq (500-3\sigma) < X$
Br	$BL \leq (300-3\sigma) < X$	NA	$BL \leq (250-3\sigma) < X$

(c) OL=Over Limit, BL=Below Limit, X=inconclusive, LOD=Limit of Detection, NA=not applicable, -- = No Testing

(d) The XRF screening test for RoHS elements-The reading may be different to the actual content

in the sample be of non-uniformity composition

(2) (a) mg/kg=ppm=0.0001%, N.D.=not detected (<MDL)

(b) Unit and Method Detection Limit(MDL) in wet chemical test

Test Items	Unit	MDL	Limit
Pb	mg/kg	2	1000
Cd	mg/kg	2	100
Hg	mg/kg	2	1000
Cr <sup>6+</sup>	mg/kg	See below	1000

## TEST REPORT

Report No.:MTi220218003-02C1

Page 13 of 20

PBBs	mg/kg	See below	1000
PBDEs	mg/kg	See below	1000
DBP	mg/kg	50	1000
BBP	mg/kg	50	1000
DEHP	mg/kg	50	1000
DIBP	mg/kg	50	1000

The MDL for single compound of PBBs & PBDEs is 20mg/kg, MDL of Cr<sup>6+</sup> for metal sample is 0.10µg/cm<sup>2</sup>. and MDL of Cr<sup>6+</sup> for polymer & composite sample is 8 mg/kg.

(c) Metal sample:

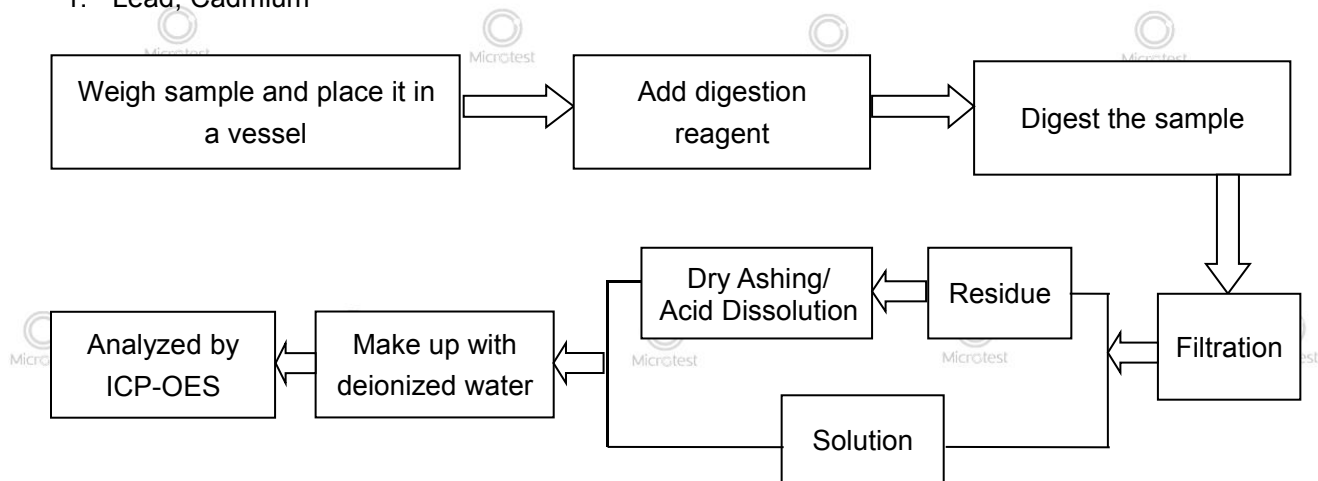
- The sample is positive for Cr<sup>6+</sup> if the Cr<sup>6+</sup> concentration is greater than 0.13 µg/cm<sup>2</sup>.  
The sample coating is considered to contain Cr<sup>6+</sup>.
- The sample is negative for Cr<sup>6+</sup> if Cr<sup>6+</sup> is ND (concentration less than 0.10 µg/cm<sup>2</sup>).  
The coating is considered a non- Cr<sup>6+</sup> based coating
- The result between 0.10 µg/cm<sup>2</sup> and 0.13 µg/cm<sup>2</sup> is considered to be inconclusive,  
unavoidable coating variations may influence the determination

Information on storage conditions and production date of the tested sample is unavailable and thus Cr<sup>6+</sup> results represent status of the sample at the time of testing.

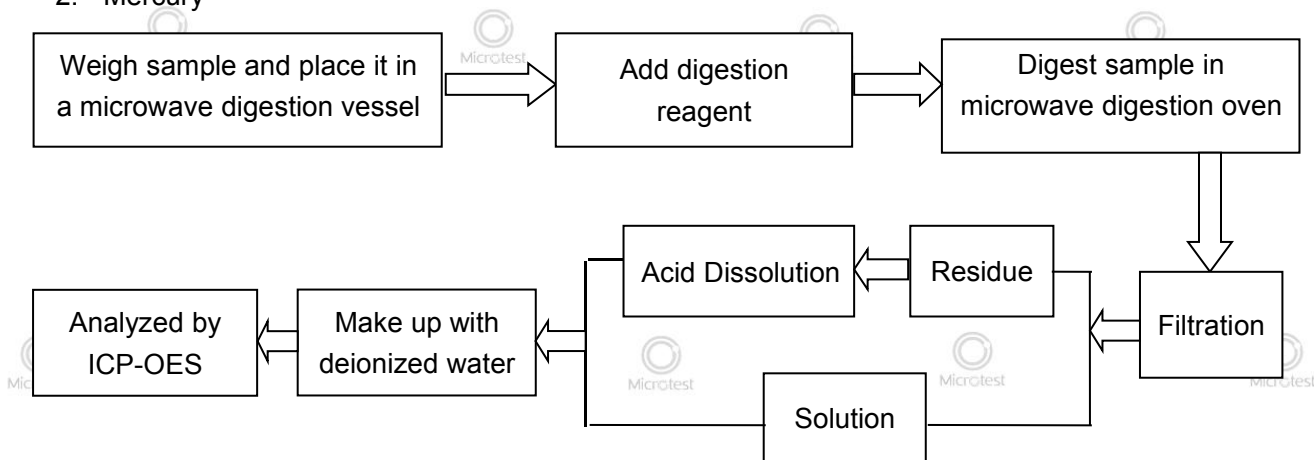
(3) As specified by client to test the specified materials only.

**Testing flow chart:**

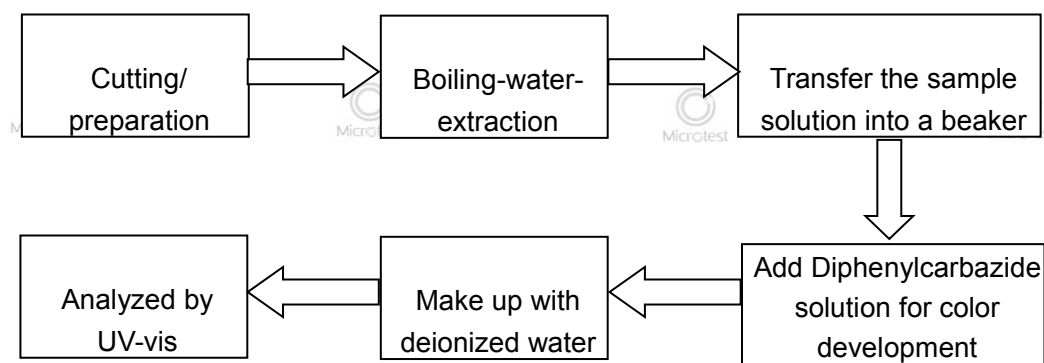
## 1. Lead, Cadmium



## 2. Mercury

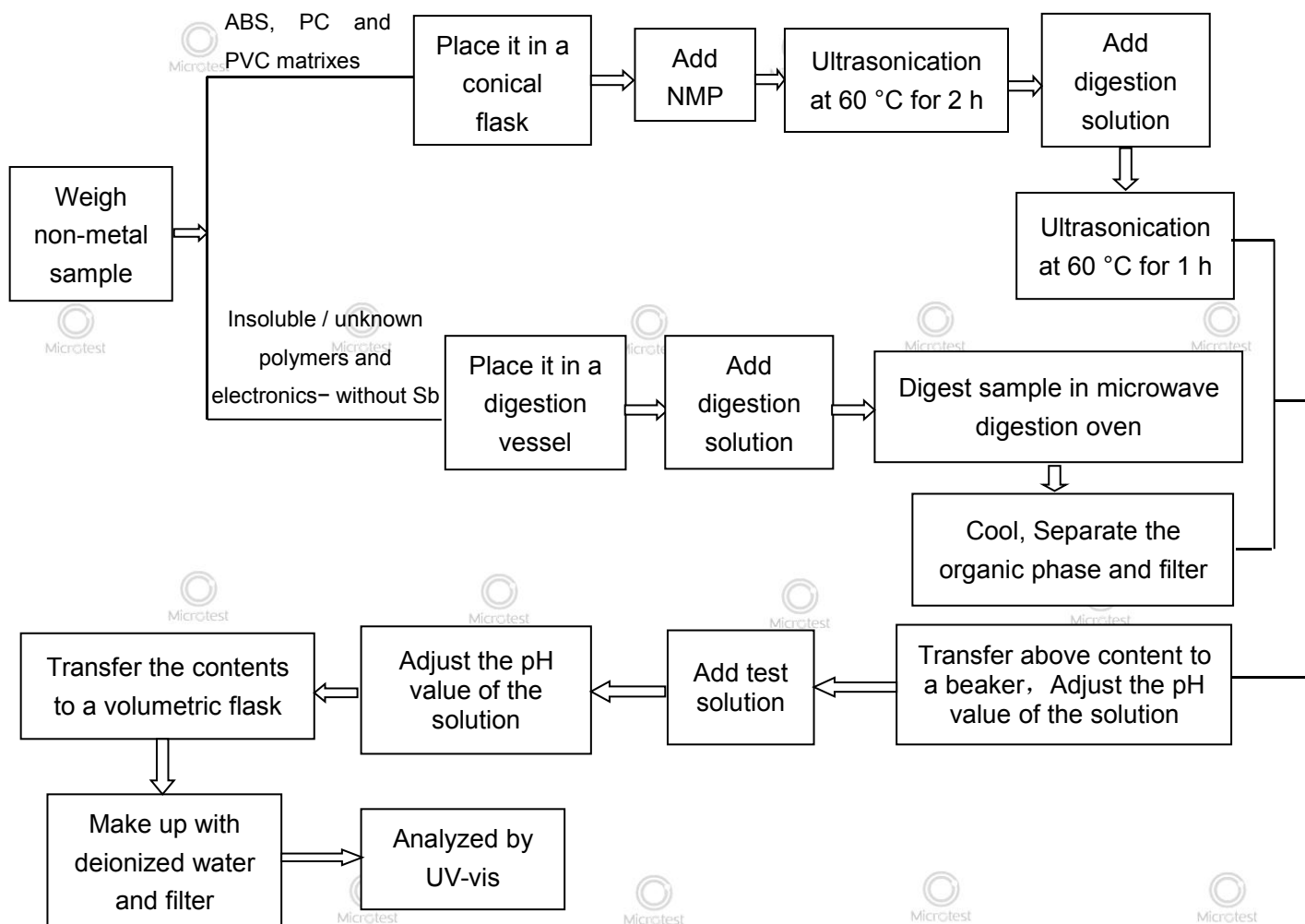


## 3. Hexavalent Chromium (For metal material)

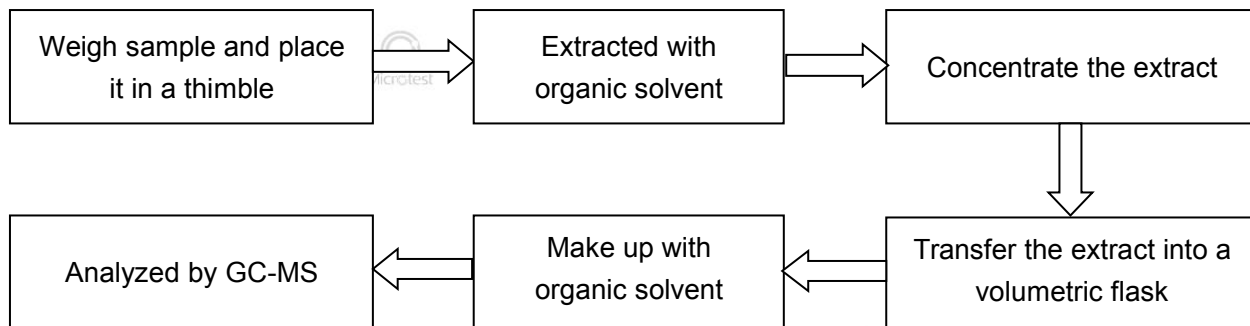




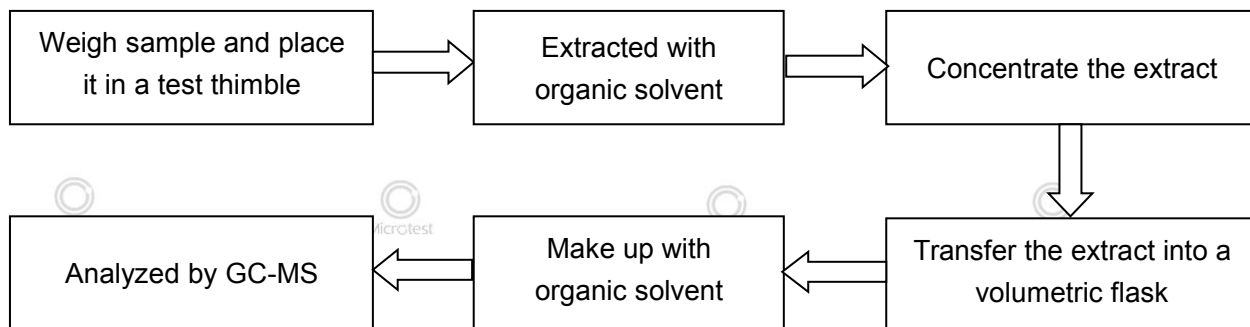
## 4. Hexavalent Chromium(For non-metal material):



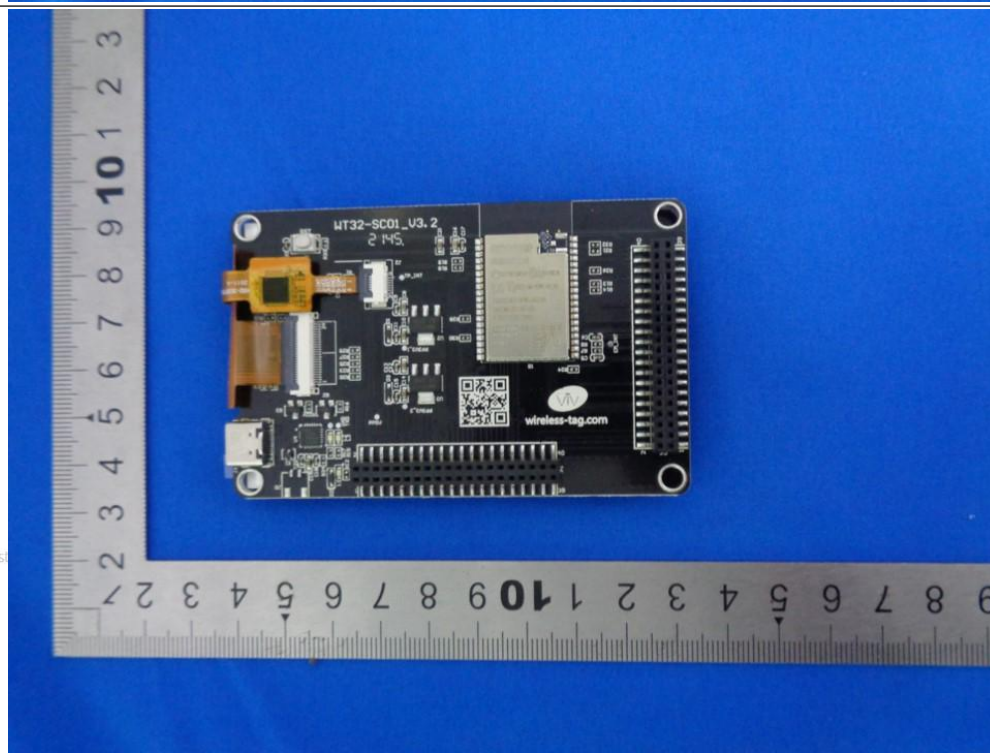
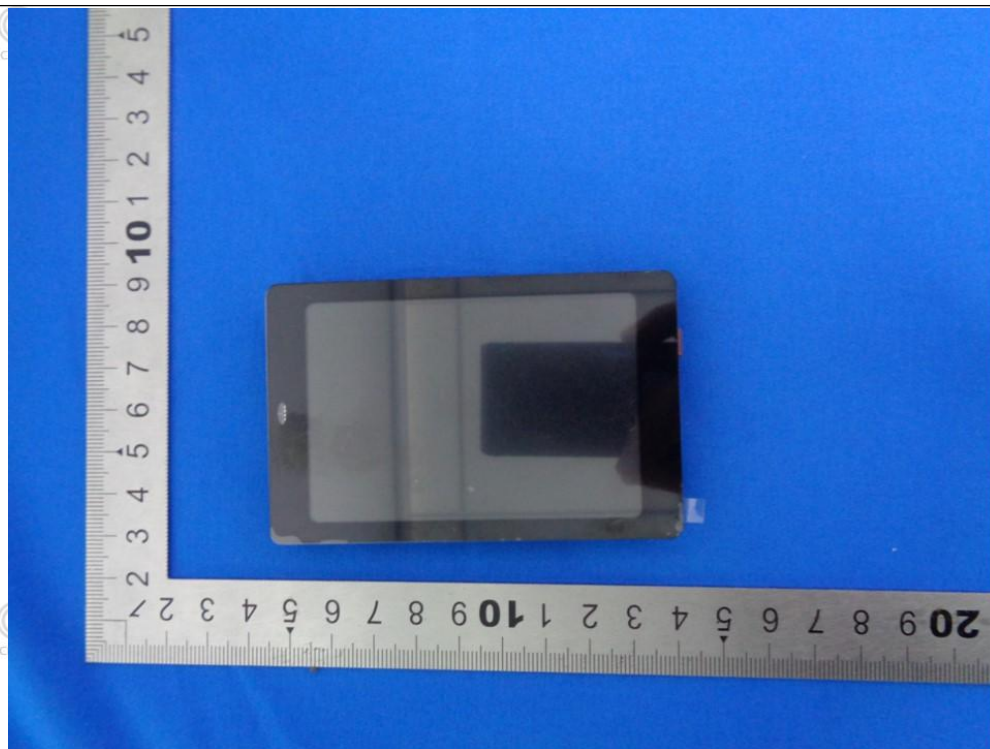
5. Polybromobiphenyls (PBBs), Polybromodiphenyl ethers (PBDEs)



6. Phthalates(DBP, BBP, DEHP, DIBP)

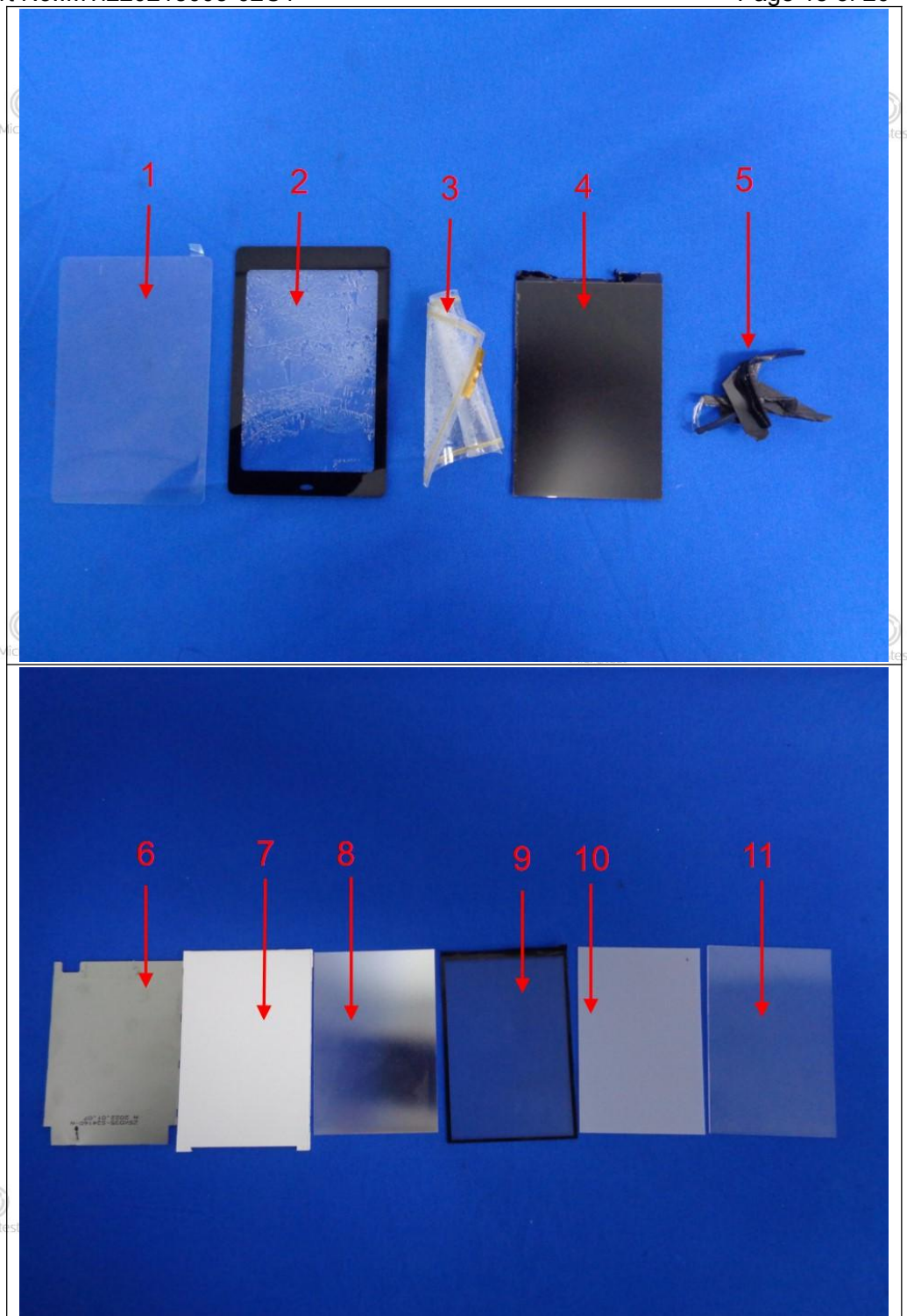


**Pictures**



Report No.:MTi220218003-02C1

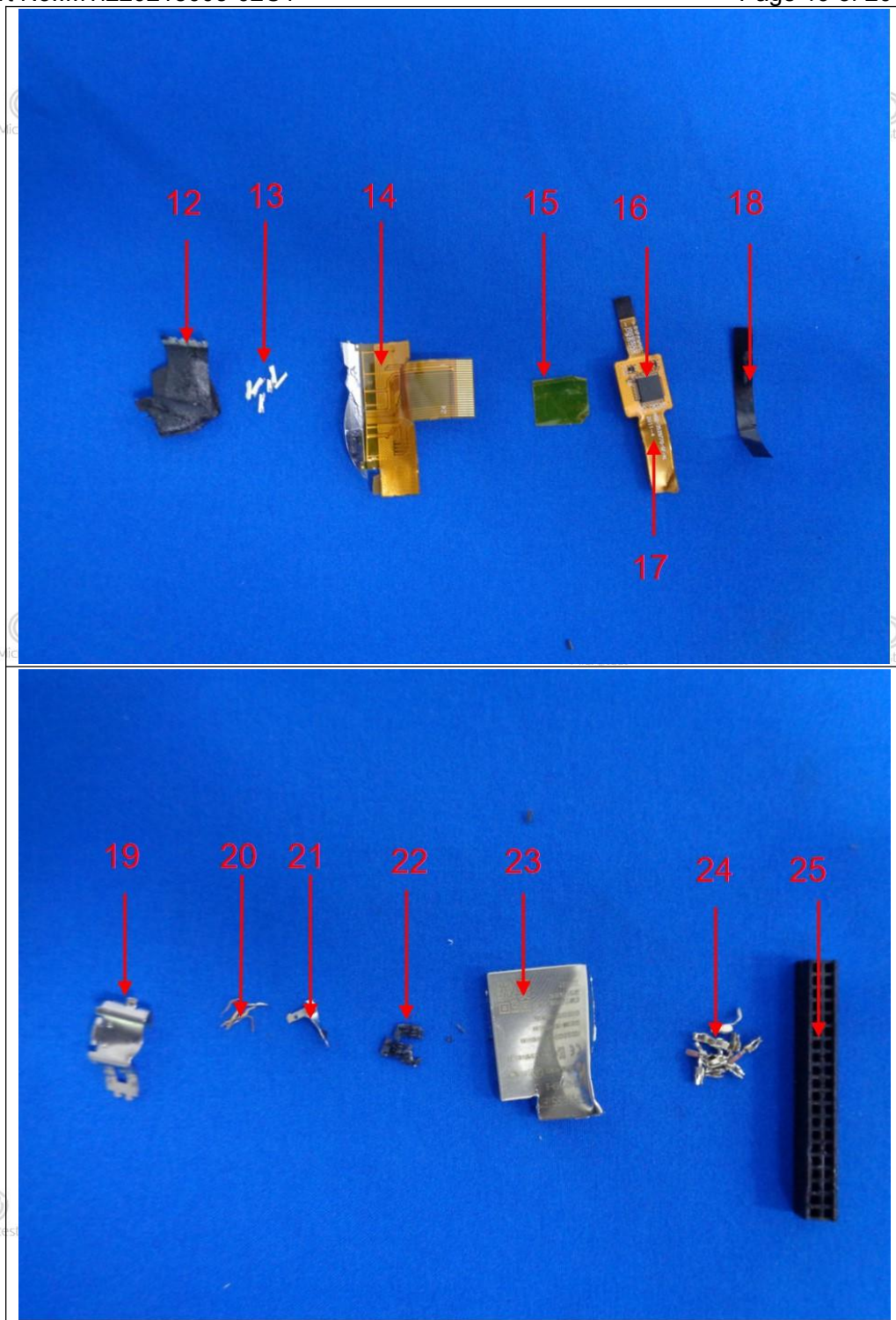
Page 18 of 20

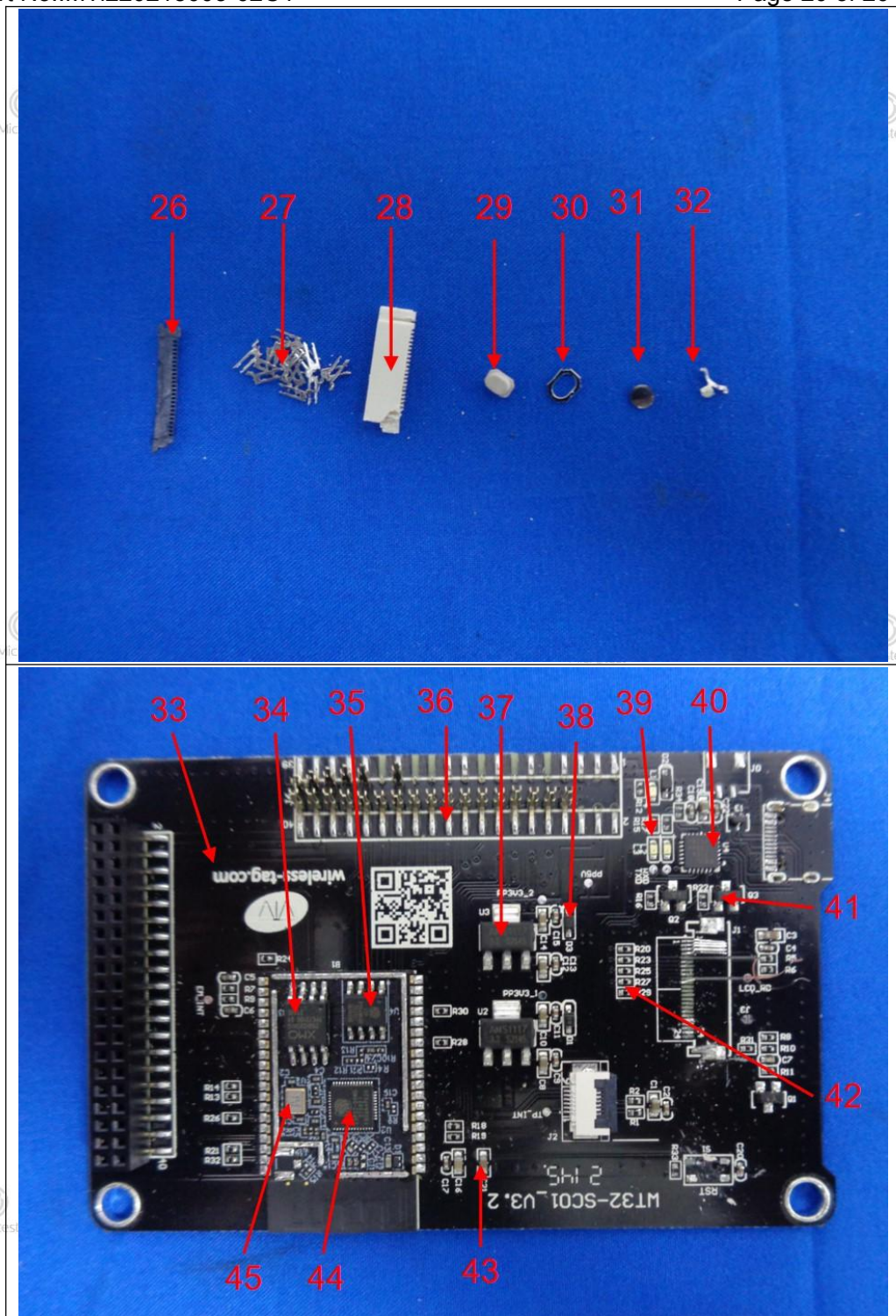




Report No.:MTi220218003-02C1

Page 19 of 20





\*\*\*\*\* END \*\*\*\*\*